



Buncombe County Farmland Preservation Program: Priority Mapping

Presented by

Avni Naik & Ariel Zijp

Agriculture & Land Resources



Introduction

Goals:

- To create a map that will serve as a guide in identifying farmland preservation priority regions in Buncombe County
- Build a more strategic approach to conservation easements and funding

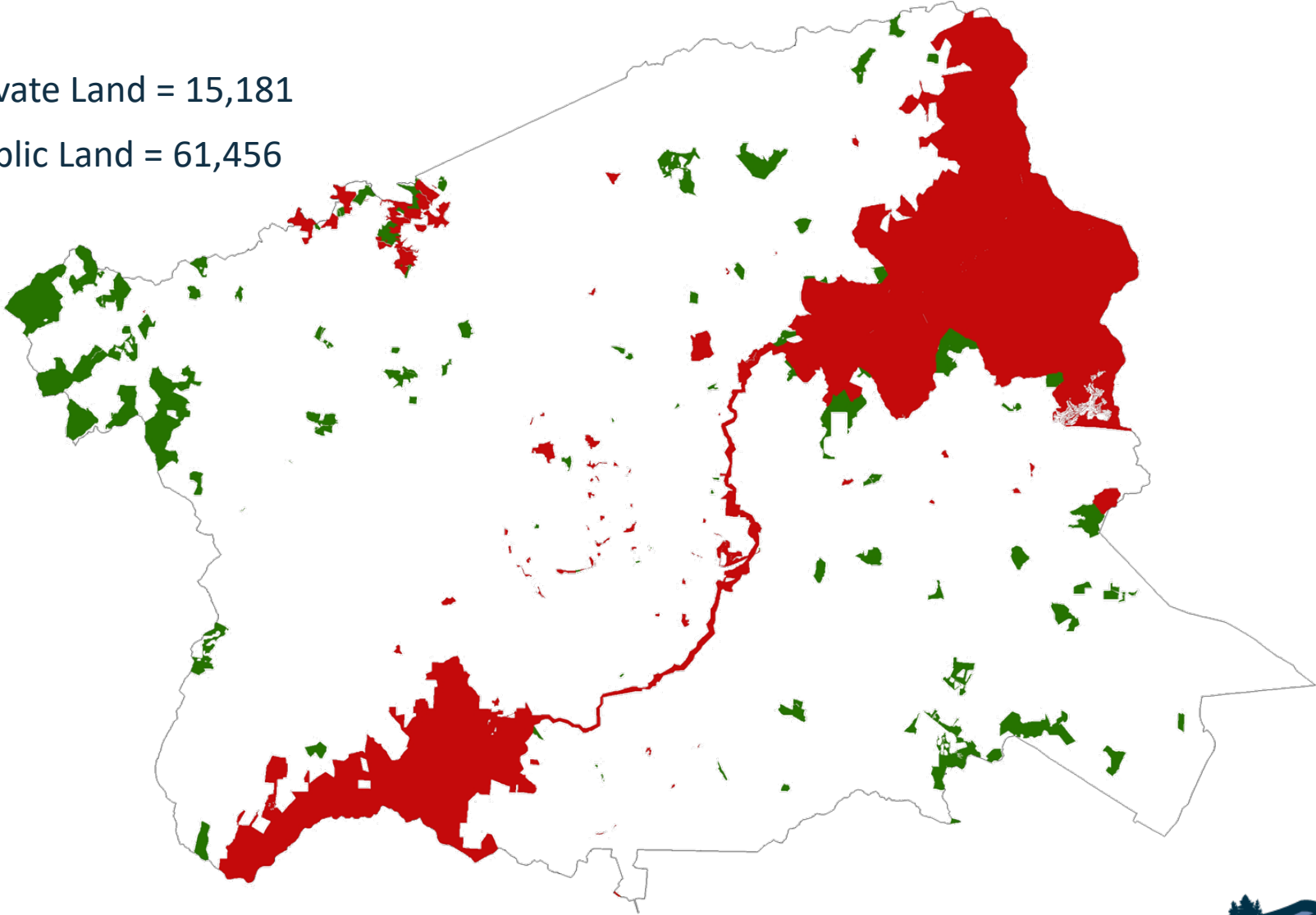
Criteria:

1. Proximity to Protected Lands
2. Soils
3. Parcel Size
4. Proximity to Voluntary Agriculture Districts (VAD) and Enhanced Voluntary Agriculture Districts (EVAD)
5. Present-Use Value (PUV) status
6. Water Quality Protection



Conserved Lands in Buncombe

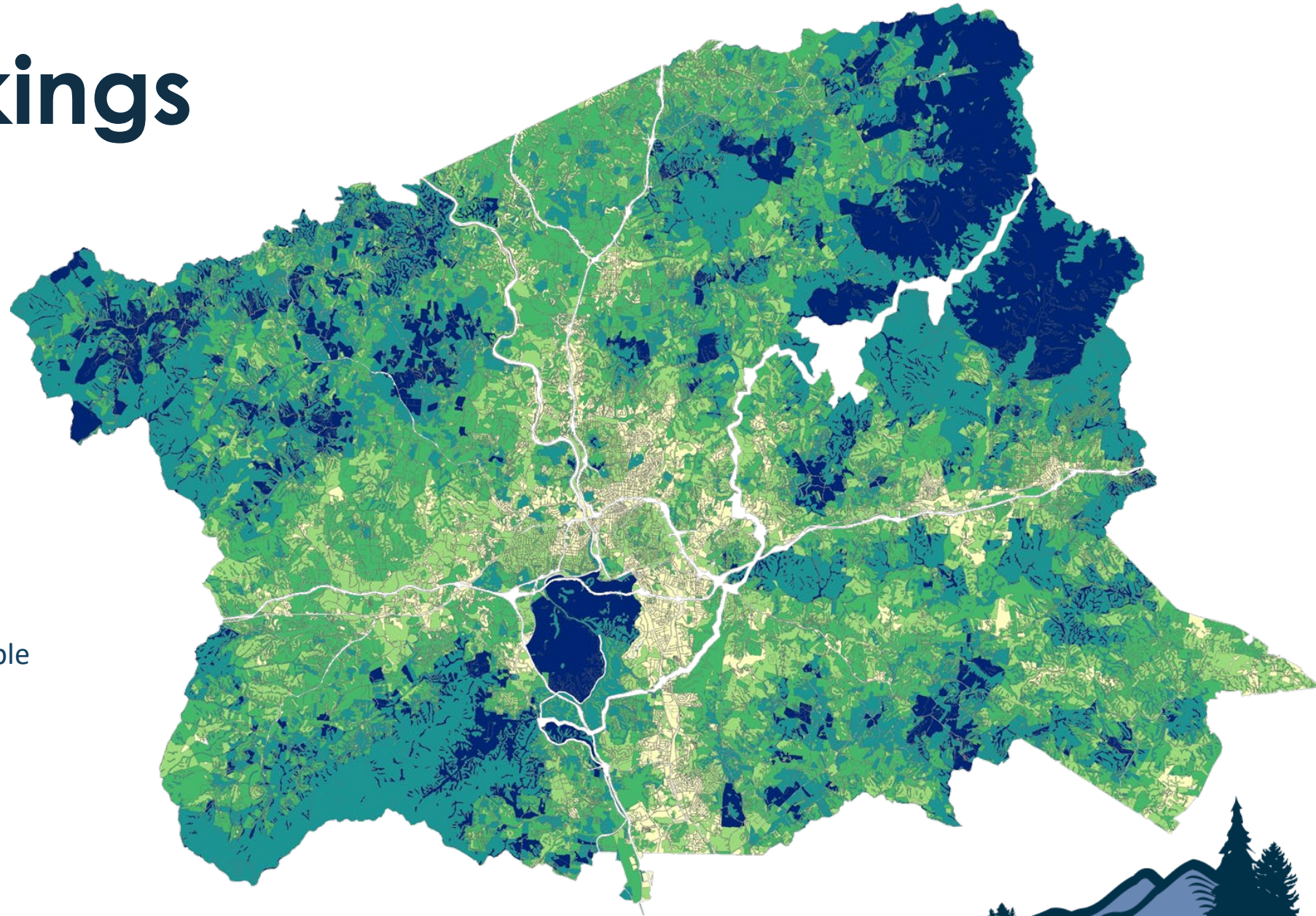
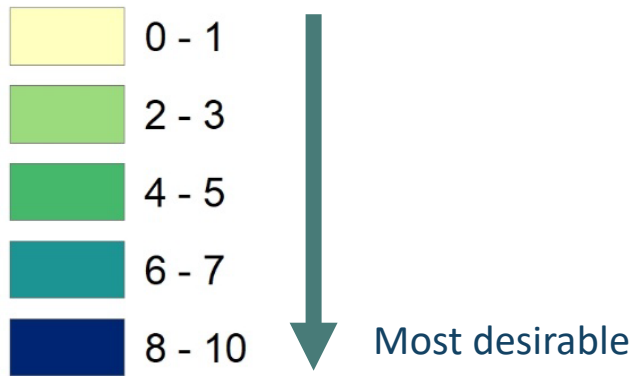
- Private Land = 15,181
- Public Land = 61,456



Currently Protected:
76,637 acres
18%

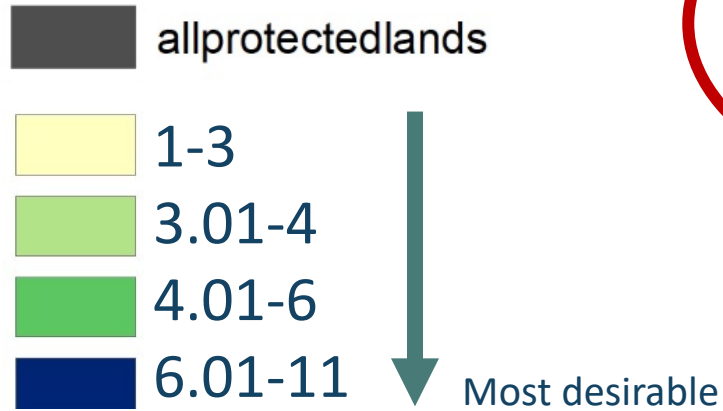


Final Rankings

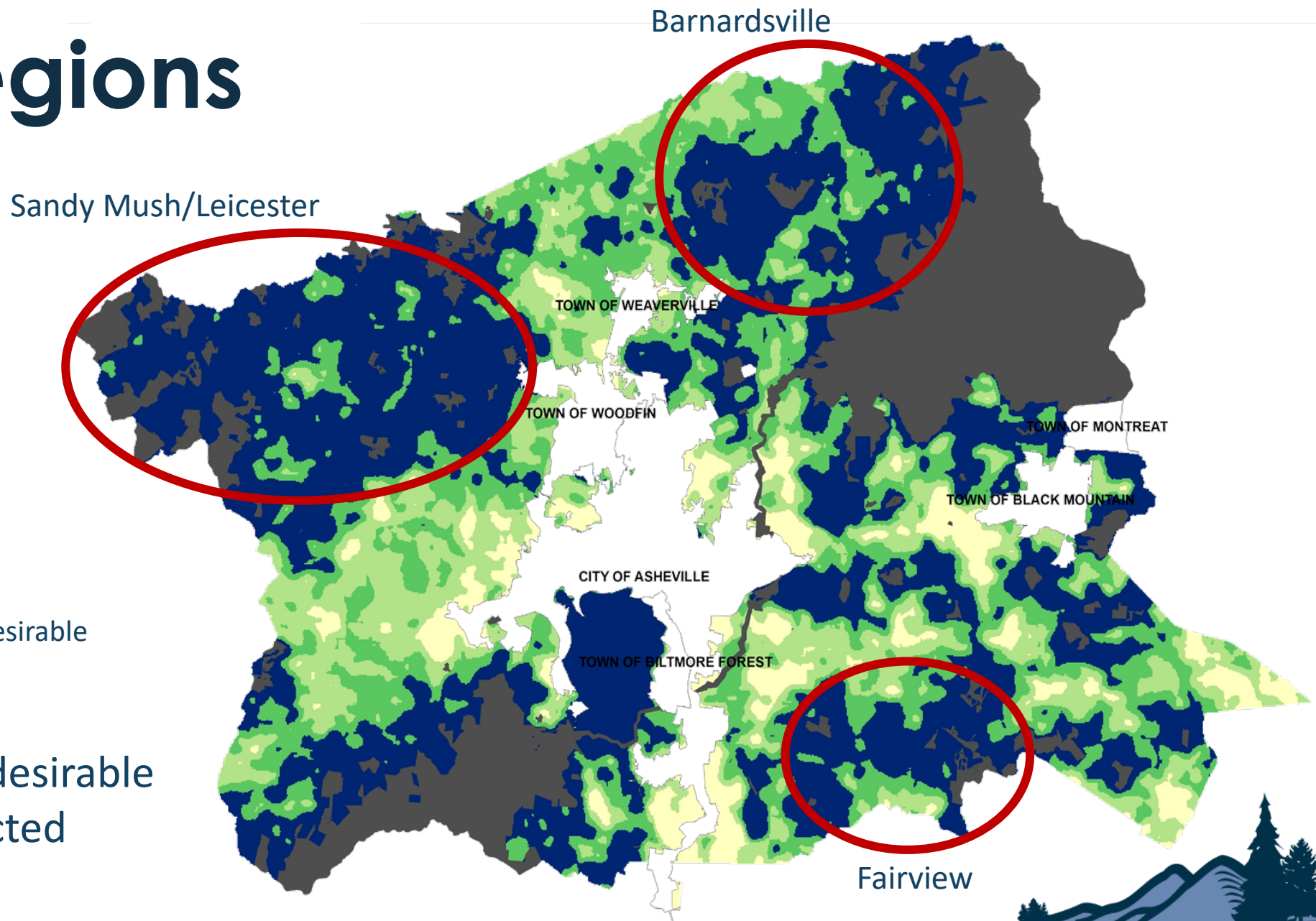


Priority Regions

Legend



Approximately 81,000 desirable acres still unprotected



Current Scenario

- Previous land preservation rate was 250 acres/year at \$150,000/year
- Current land preservation rate is 850 acres/year at \$750,000/year
 - To reach 20% it would take **9** years
 - To reach 25% it would take **34** years
 - To reach 30% it would take **58** years

Currently
Protected:
76,637 acres
18%



Options

Currently
preserving
850
acres/year

- In the next 8 years
 - 19% = 850 acres/year = \$750,000/year at current rate
 - 20% = 920 acres/year = \$1,150,000/year*
 - 25% = 3,550 acres/year = \$4,437,500/year*
 - 30% = 6,170 acres/year = \$7,712,500/year*
 - 37% = all desirable property = 10,125 acres/year = \$10,125,000/year*

*Based on \$1,000/acre



Vision

- ✓ Joint Open Space Plan
- ✓ Integration of:
 - ✓ Comprehensive Plan
 - ✓ Priority Regional Mapping
 - ✓ Recreation Services
 - ✓ Public Lands

